

Spreadsheet for collection of dissolved oxygen data					
Little Rice Lake, Forest Co. WI					
Meter used: YSI Prosolo					
Date of Collection:		3/23/2023			
Data Collected by:		S. Motiff & D Obright			
Date aerator started up for winter:			12/31/2022		
current % ice coverage in aeration area:			50		
Ice thickness:			18"		
Callibration Log					
Date of Callibration:		3/23/2023			
current barometric pressure in mmHg:		754.38	NOTE: value should be somewhere around 700-800		
Little Rice Lake elevation: 1625'					
uncorrected barometric pressure (mmHg)= current barometric pressure - 43					
uncorrected barometric pressure (mmHg) :			711.38		
Caibration Record (get by selecting 'File' - 'View File Record' on hand held unit)					
Date:	3/23/2023				
Time:	11:33 AM				
Sensor Type:	ODO/T		Sensor Value:	105.1	
Sensor:	22A1056754		ODO Gain:	0.851418	
Sw Version:	3.2.11		Barometer(mm Hg):	711.4	
Method:	DO Air Cal		Temperature(C):	21.9	
Cal Value:	711.4				
Pre Cal Value:	760.2				

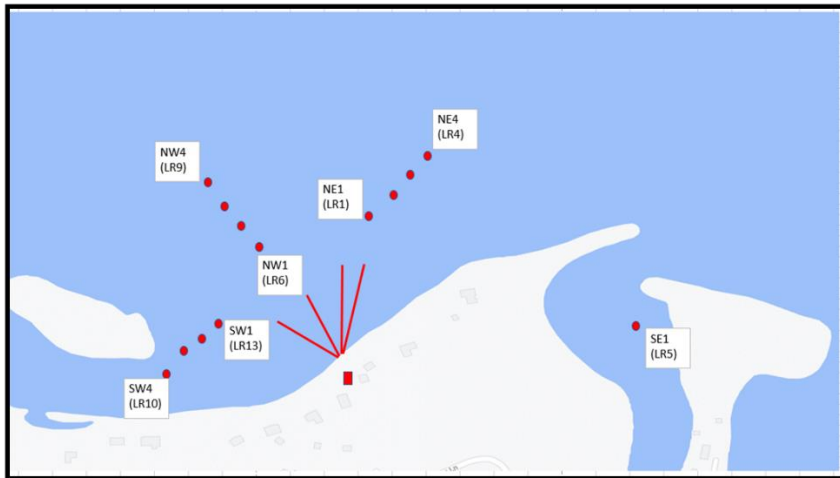
		Target latitude	Target longitude		
Datasheet		45.59269	-89.01223		
Label		Actual latitude	Actual longitude		
NE1		at target	at target		Comments
Depth below surface (ft)	temp (F)	mmHg	DO %	DO mg/L	
2	33.1	712.1	31.8	4.57	
3	33.8	712.1	18.6	2.64	
4	34.4	712.1	16.8	2.37	
5	34.7	712.1	14.3	2	
6	33.6	712.1	6.3	0.87	
7	37.4	712.2	0.9	0.12	
		Target latitude	Target longitude		
		45.59284	-89.01211		
		Actual latitude	Actual longitude		
NE2		at target	at target		
Depth below surface (ft)	temp (F)	mmHg	DO %	DO mg/L	
2	32.9	712.1	25.8	3.73	
3	34	712.1	16.8	2.38	
4	34.4	712.1	14.8	2.09	
5	34.8	712.1	12.9	1.8	
6	35.3	712.1	7.9	1.08	
7	37.8	712.1	1.6	0.21	
		Target latitude	Target longitude		
		45.59296	-89.01195		
		Actual latitude	Actual longitude		
NE3		at target	at target		
Depth below surface (ft)	temp (F)	mmHg	DO %	DO mg/L	
2	32.6	712.1	29.8	4.31	

3	34.1	712.1	13.5	1.91	
4	34.3	712	12.6	1.78	
5	34.7	712	13.1	1.83	
6	35.2	712.1	5.8	0.8	
7	37.3	711.9	0.6	0.08	
		Target latitude	Target longitude		
		45.59311	-89.01181		
		Actual latitude	Actual longitude		
NE4		at target	at target		
Depth below surface (ft)	temp (F)	mmHg	DO %	DO mg/L	
2	32.8	711.9	28.8	4.16	
3	34	711.9	14.5	2.05	
4	34.5	711.9	12.1	1.7	
5	34.6	712	12.4	1.74	
6	35.2	711.9	6.3	0.87	
7	37.5	712	0.9	0.12	
		Target latitude	Target longitude		
		45.59273	-89.01401		
		Actual latitude	Actual longitude		
NW1		at target	at target		
Depth below surface (ft)	temp (F)	mmHg	DO %	DO mg/L	
2	32.7	712	27.2	3.93	
3	34.1	712	11.4	1.61	
4	34.3	712.1	10.7	1.5	
5	34.4	712.1	9.7	1.36	
6	35.9	712.1	2.3	0.3	
7	39	712.1	0.1	0.02	
		Target latitude	Target longitude		
		45.59298	-89.01424		

		Actual latitude	Actual longitude		
NW2		at target	at target		
Depth below surface (ft)	temp (F)	mmHg	DO %	DO mg/L	
2	32.5	711.9	23.1	3.36	
3	33.8	712	7.2	1.02	
4	34.2	712	9.2	1.31	
5	34.5	712	9.1	1.29	
6	36	712	1.1	0.15	
7	39.3	712	-0.5	-0.07	
		Target latitude	Target longitude		
		45.59334	-89.01449		
		Actual latitude	Actual longitude		
NW3		at target	at target		
Depth below surface (ft)	temp (F)	mmHg	DO %	DO mg/L	
2	32.4	712.1	24.1	3.5	
3	33.3	712.1	14.6	2.07	
4	34.1	712	9.1	1.28	
5	34.6	712.1	9	1.26	
6	36.2	712.1	2.3	0.31	
7	38.9	712	-0.7	-0.1	
8	40.6	712	-1	-0.12	
		Target latitude	Target longitude		
		45.59359	-89.01481		
		Actual latitude	Actual longitude		
NW4		at target	at target		
Depth below surface (ft)	temp (F)	mmHg	DO %	DO mg/L	
2	32.6	711.9	24.4	3.54	
3	33.2	712	20.3	2.91	
4	34.1	712	8.2	1.16	
5	34.8	712	7.9	1.11	
6	36.3	712	0.9	0.12	

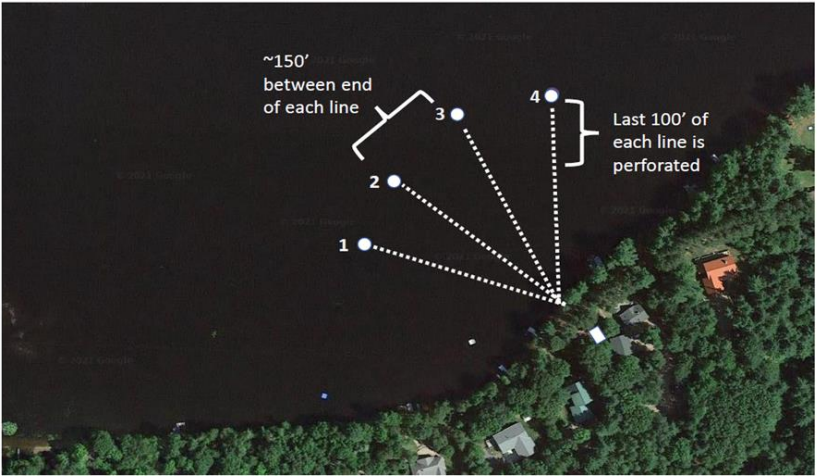
7	38.6	712.1	-0.6	-0.08	
8	40.9	712.1	-1	-0.13	
		Target latitude	Target longitude		
		45.59187	-89.01481		
		Actual latitude	Actual longitude		
SW1		at target	at target		
Depth below surface (ft)	temp (F)	mmHg	DO %	DO mg/L	
2	33.9	711.8	21.2	3.01	
3	34.4	711.8	14.3	2.02	
4	34.7	711.8	13	1.83	
5	34.8	711.8	13.3	1.87	
6	34.9	711.8	11.2	1.57	
7	35.6	711.8	4.6	0.63	
		Target latitude	Target longitude		
		45.59171	-89.01494		
		Actual latitude	Actual longitude		
SW2		at target	at target		
Depth below surface (ft)	temp (F)	mmHg	DO %	DO mg/L	
2	32.9	711.9	19.8	2.86	
3	33.8	711.8	12	1.7	
4	34.4	711.8	12.3	1.73	
5	34.6	711.9	12.8	1.8	
6	34.6	711.8	12.7	1.78	
		Target latitude	Target longitude		
		45.59161	-89.01508		
		Actual latitude	Actual longitude		
SW3		at target	at target		

Depth below surface (ft)	temp (F)	mmHg	DO %	DO mg/L	
2	32.8	711.8	16.6	2.39	
3	33.8	711.8	11.1	1.57	
4	34.3	711.8	11	1.55	
5	34.4	711.8	11.4	1.61	
		Target latitude	Target longitude		
		45.59149	-89.01521		
		Actual latitude	Actual longitude		
SW4		at target	at target		
Depth below surface (ft)	temp (F)	mmHg	DO %	DO mg/L	
2	32.9	711.8	16	2.31	
3	33.9	711.8	11	1	
4	34.3	711.9	10.1	1.43	
5	34.5	711.8	8.9	1.25	



Little Rice Lake, Forest Co, WI
End of aerator line locations

12/21



- 1. 45.5917248
-89.0141923
- 2. 45.5920556
-89.0139881
- 3. 45.5923953
-89.0135335
- 4. 45.5925563
-89.0128763

Lat/lon taken at end of each line after final install

Spreadsheet for collection of dissolved oxygen data			
Little Rice Lake, Forest Co. WI			

Meter used:	YSI ProSolo		
Date of Collection:	2/13/2023		
Data Collected by:	S Motiff, D OBright		
Date aerator started up for winter:	12/31/2022		
current % ice coverage in aeration area:	60		
Ice thickness:	12-15"		
Callibration Log			
Date of Callibration:	2/13/2023		
current barometric pressure in mmHg:	753.4 (29.66")	NOTE: value should be somewhere around 700-800	
Little Rice Lake elevation: 1625'			
uncorrected barometric pressure (mmHg)= current barometric pressure - 43			
uncorrected barometric pressure (mmHg) :		710.4	
Caibration Record (get by selecting 'File' - 'View File Record' on hand held unit)			
Date:	2/13/2023		
Time:	9:41 AM		
Sensor Type:	ODO/T	Sensor Value:	92.4
Sensor:	22A105675 4	ODO Gain:	0.991557
Sw Version:	3.2.11	Barometer(mmHg):	753.4
Method:	DO Air Cal	Temperature(C):	19.6
Cal Value:	99.1		
Pre Cal Value:	97.3		
	Target latitude	Target longitude	
Datasheet	45.59269	-89.01223	
Label	Actual latitude	Actual longitude	
NE1	at target	at target	

Depth below surface (ft)	temp (F)	mmHg	DO %	DO mg/L
2	35	753.6	6.4	0.9
3	35.7	753.6	5.6	0.77
4	35.7	753.6	5.1	0.71
5	35.8	753.7	4.8	0.66
6	36.5	753.7	2	0.28
		Target latitude	Target longitude	
		45.59284	-89.01211	
		Actual latitude	Actual longitude	
NE2		at target	at target	
Depth below surface (ft)	temp (F)	mmHg	DO %	DO mg/L
2	34.9	753.7	4.4	0.6
3	35.6	753.7	4.1	0.57
4	35.6	753.7	4	0.55
5	35.7	753.7	3.6	0.5
6	36.2	753.7	1.7	0.23
		Target latitude	Target longitude	
		45.59296	-89.01195	
		Actual latitude	Actual longitude	
NE3		at target	at target	
Depth below surface (ft)	temp (F)	mmHg	DO %	DO mg/L
2	34.5	753.7	3.6	0.5
3	35.3	753.7	3.4	0.47
4	35.6	753.7	2.2	0.3
5	35.7	753.7	1.7	0.23
6	36	753.7	0.7	0.09
		Target latitude	Target longitude	
		45.59311	-89.01181	

		Actual latitude	Actual longitude	
NE4		at target	at target	
Depth below surface (ft)	temp (F)	mmHg	DO %	DO mg/L
2	35.4	753.7	2.2	0.31
3	35.5	753.6	2.3	0.32
4	35.8	753.7	1.5	0.21
5	37.1	753.6	-0.4	-0.07
6	39.2	753.7	-1	-0.13
		Target latitude	Target longitude	
		45.59273	-89.01401	
		Actual latitude	Actual longitude	
NW1		at target	at target	
Depth below surface (ft)	temp (F)	mmHg	DO %	DO mg/L
2	33.4	753.6	3	0.43
3	34.9	753.7	2.5	0.35
4	35.5	753.7	2	0.28
5	36.5	753.7	0	0
6	39.2	753.7	-0.8	-0.1
		Target latitude	Target longitude	
		45.59298	-89.01424	
		Actual latitude	Actual longitude	
NW2		at target	at target	
Depth below surface (ft)	temp (F)	mmHg	DO %	DO mg/L
2	33.3	753.6	3.9	0.56
3	34.8	753.6	2.3	0.32
4	35.6	753.6	1.4	0.19
5	37.1	753.7	-0.6	-0.08
6	39.2	753.6	-1.1	-0.14
7	40.5	753.6	-1.3	-0.17

		Target latitude	Target longitude	
		45.59334	-89.01449	
		Actual latitude	Actual longitude	
NW3		at target	at target	
Depth below surface (ft)	temp (F)	mmHg	DO %	DO mg/L
2	33.3	753.6	2.7	0.39
3	34.8	753.7	-0.4	-0.06
4	35.7	753.6	-1	-0.14
5	37	753.6	-1.3	-0.18
6	39.2	753.6	-1.4	-0.18
7	40.7	753.7	-1.4	-0.18
		Target latitude	Target longitude	
		45.59359	-89.01481	
		Actual latitude	Actual longitude	
NW4		at target	at target	
Depth below surface (ft)	temp (F)	mmHg	DO %	DO mg/L
2	33.6	753.6	0.5	0.07
3	34.6	753.6	-0.8	-0.11
4				
5				
6				
7				
		Target latitude	Target longitude	
		45.59187	-89.01481	
		Actual latitude	Actual longitude	
SW1		at target	at target	
Depth below surface (ft)	temp (F)	mmHg	DO %	DO mg/L
2	33.7	753.6	2	0.29
3	35	753.6	-0.2	-0.03
4	35.3	753.6	-0.9	-0.12

5	36.5	753.6	-1.2	-0.16
6	37.3	753.6	-1.3	-0.17
7	38.7	753.6	-1.3	-0.17
		Target latitude	Target longitude	
		45.59171	-89.01494	
		Actual latitude	Actual longitude	
SW2		at target	at target	
Depth below surface (ft)	temp (F)	mmHg	DO %	DO mg/L
2	34.1	753.7	0.4	0.05
3	35.2	753.7	-0.1	-0.01
4	35.5	753.7	0.5	0.07
5	36	753.7	-1.2	-0.17
6	37.2	753.7	-1.6	-0.22
		Target latitude	Target longitude	
		45.59161	-89.01508	
		Actual latitude	Actual longitude	
SW3		at target	at target	
Depth below surface (ft)	temp (F)	mmHg	DO %	DO mg/L
2	33.7	753.7	1.1	0.15
3	34.8	753.7	-0.9	-0.12
4	35.4	753.7	0	0
5	36.1	753.7	-1.3	-0.19
		Target latitude	Target longitude	
		45.59149	-89.01521	
		Actual latitude	Actual longitude	
SW4		at target	at target	

Depth below surface (ft)	temp (F)	mmHg	DO %	DO mg/L
2	33.6	753.7	2.2	0.3
3	34.9	753.7	-0.3	-0.05
4	35.4	753.7	0.1	0.01

Spreadsheet for collection of dissolved oxygen data					
Little Rice Lake, Forest Co. WI					
Meter used:		YSI ProSolo			
Date of Collection:		1/10/2023			
Data Collected by:		Steve Motiff & Dave Obright			
Date aerator started up for winter:			12/31/2022		
current % ice coverage in aeration area:			60		
Ice thickness:		12"			
Callibration Log					
Date of Callibration:		1/9/2023			
current barometric pressure in mmHg:		761		NOTE: value should be somewhere around 700-800	
Little Rice Lake elevation: 1625'					
uncorrected barometric pressure (mmHg)= current barometric pressure - 43					
uncorrected barometric pressure (mmHg) :		718			
Caibration Record (get by selecting 'File' - 'View File Record' on hand held unit)					
Date:	1/9/2023				
Time:	3:22 PM				
Sensor Type:	ODO/T			Sensor Value:	92.7
Sensor:	22A1056 754			ODO Gain:	0.97302 2
Sw Version:	3.2.11			Barometer(mm Hg):	718.2
Method:	DO Air Cal			Temperature(C):	21.9
Cal Value:	94.5				
Pre Cal Value:	86.8				

		Target latitude	Target longitude		
Datasheet		45.59269	-89.01223		
Label		Actual latitude	Actual longitude		
NE1		at target	at target		Comments
Depth below surface (ft)	temp (F)	mmHg	DO %	DO mg/L	
1	34.1	716.4	60.8	8.55	
2	36.5	716.4	38.6	5.22	
3	36.8	716.5	33.9	4.58	
4	36.9	716.5	31.3	4.23	
5	37.2	716.5	29.7	4.01	
6	38.3	716.5	21.1	2.79	
		Target latitude	Target longitude		
		45.59284	-89.01211		
		Actual latitude	Actual longitude		
NE2		at target	at target		
Depth below surface (ft)	temp (F)	mmHg	DO %	DO mg/L	
1	33	716.4	45.9	6.62	
2	36	716.4	36.5	5.01	
3	36.5	716.5	33.3	4.53	
4	36.9	716.4	30	4.06	
5	37	716.5	28.7	3.88	
6	37.9	716.3	21.9	2.92	
		Target latitude	Target longitude		
		45.59296	-89.01195		
		Actual latitude	Actual longitude		
NE3		at target	at target		
Depth below surface (ft)	temp (F)	mmHg	DO %	DO mg/L	
1	32.7	716.4	42.7	6.07	
2	35.6	716.4	35.5	4.89	
3	36.6	716.5	31.9	4.33	

4	36.9	716.4	29.8	4.03	
5	37.1	716.4	28.7	3.88	
6	38.3	716.4	20	2.65	
		Target latitude	Target longitude		
		45.59311	-89.01181		
		Actual latitude	Actual longitude		
NE4		at target	at target		
Depth below surface (ft)	temp (F)	mmHg	DO %	DO mg/L	
1	33	716.5	39.1	5.64	
2	35.6	716.4	34.1	4.72	
3	36.6	716.5	30.7	4.18	
4	37	716.5	28.1	3.8	
5	37.4	716.5	27.9	3.76	
6	38.9	716.5	16.4	2.15	
		Target latitude	Target longitude		
		45.59273	-89.01401		
		Actual latitude	Actual longitude		
NW1		at target	at target		
Depth below surface (ft)	temp (F)	mmHg	DO %	DO mg/L	
1	33.1	716.4	33.1	4.76	
2	35.8	716.3	32.5	4.47	
3	36.5	716.3	31.6	4.32	
4	36.8	716.4	31	4.21	
5	38.1	716.3	23.3	3.1	
6	39.2	716.3	9.2	1.2	
		Target latitude	Target longitude		
		45.59298	-89.01424		
		Actual latitude	Actual longitude		

NW2		at target	at target		
Depth below surface (ft)	temp (F)	mmHg	DO %	DO mg/L	
1	33.2	716.3	28.8	4.12	
2	36.1	716.3	34.4	4.73	
3	36.8	716.4	35.9	4.88	
4	37.2	716.4	35.7	4.81	
5	38.5	716.4	22.7	3	
6	39.2	716.4	10.6	1.38	
		Target latitude	Target longitude		
		45.59334	-89.01449		
		Actual latitude	Actual longitude		
NW3		at target	at target		
Depth below surface (ft)	temp (F)	mmHg	DO %	DO mg/L	
1	32.4	716.4	25.4	3.69	
2	34.8	716.4	22.1	3.1	
3	36.4	716.5	32.6	4.46	
4	37.8	716.4	31	4.15	
5	38.8	716.4	21.9	2.87	
6	39.4	716.5	11.3	1.47	
7	39.6	716.4	2.4	0.31	
		Target latitude	Target longitude		
		45.59359	-89.01481		
		Actual latitude	Actual longitude		
NW4		at target	at target		
Depth below surface (ft)	temp (F)	mmHg	DO %	DO mg/L	
1	33.1	716.4	21.5	3.1	
2	35	716.5	21.1	2.94	
3	36.9	716.6	31.1	4.23	
4	38.1	716.5	24.9	3.31	
5	39.2	716.6	14.8	1.93	
6	39.8	716.6	10.2	1.33	

		Target latitude	Target longitude		
		45.59187	-89.01481		
		Actual latitude	Actual longitude		
SW1		at target	at target		
Depth below surface (ft)	temp (F)	mmHg	DO %	DO mg/L	
1	33.9	716.6	75	10.7	
2	36.1	716.6	42	5.77	
3	36.7	716.6	37	5.03	
4	37.1	716.7	35.2	4.76	
5	37.8	716.8	30.2	4.03	
6	39.2	716.9	20.1	2.62	
		Target latitude	Target longitude		
		45.59171	-89.01494		
		Actual latitude	Actual longitude		
SW2		at target	at target		
Depth below surface (ft)	temp (F)	mmHg	DO %	DO mg/L	
1	34	716.9	91.7	13.01	
2	36.3	717	42.5	5.8	
3	37	717	35.5	4.8	
4	37.1	717	33.5	4.54	
5	38.1	717	20.6	2.74	
6	39.3	717	10.5	1.37	
		Target latitude	Target longitude		
		45.59161	-89.01508		
		Actual latitude	Actual longitude		
SW3		at target	at target		
Depth below surface (ft)	temp (F)	mmHg	DO %	DO mg/L	
1	35.1	716.9	46.1	6.39	

2	36.6	716.9	35.7	4.87	
3	37	716.9	35.7	4.84	
4	37.2	716.9	34.1	4.6	
5	38.1	719.8	17.7	2.36	
		Target latitude	Target longitude		
		45.59149	-89.01521		
		Actual latitude	Actual longitude		
SW4		at target	at target		
Depth below surface (ft)	temp (F)	mmHg	DO %	DO mg/L	
1	35.5	716.7	49.2	6.79	
2	36.6	716.6	39.5	5.38	
3	36.8	716.6	36.8	5.01	
4	37.3	716.6	32.4	4.36	